

AGENDA

Meeting: PEWSEY AREA BOARD
Place: Bouverie Hall, North Street, Pewsey, Wiltshire SN9 5EQ
Date: Monday 7 November 2011
Time: 7.00 pm

Including the Parishes of Alton, Beechingstoke, Burbage, Buttermere, Charlton and Wilsford, Chirton, Easton, Grafton, Great Bedwyn, Ham, Little Bedwyn, Manningford, Marden, Milton Lilbourne, North Newnton, Oare, Patney, Pewsey, Rushall, Shalbourne, Stanton St Bernard, Upavon, Wilcot and Huish, Woodborough, Wootton Rivers

The Area Board welcomes and invites contributions from members of the public. The chairman will try to ensure that everyone who wishes to speak will have the opportunity to do so.

If you have any requirements that would make your attendance at the meeting easier, please contact your Democratic Services Officer.

Refreshments and networking opportunities will be available from 6:30pm.

Please direct any enquiries on this Agenda to Sharon Smith (Democratic Services Officer), on 01225 718378 or email sharonL.smith@wiltshire.gov.uk
Or Caroline Brailey (Pewsey Community Area Manager) 01225 718609 or email caroline.brailey@wiltshire.gov.uk

All the papers connected with this meeting are available on the Council's website at www.wiltshire.gov.uk

Press enquiries to Communications on direct lines (01225) 713114 / 713115.

Wiltshire Councillors

Robert Hall	Pewsey Vale
Jerry Kunkler (Chairman)	Pewsey
Stuart Wheeler (Vice Chairman)	Burbage + Bedwyns

Map enclosed at page 1

Items to be considered	Time
<p><u>A stringed quartet will be playing from 6.40 pm to 6.55 pm</u></p>	
<p>1. Welcome and Introductions</p> <p>2. Apologies for Absence</p> <p>3. Minutes (<i>Pages 3 - 24</i>)</p> <p>To confirm the minutes of the meeting held on 5 September 2011 and the Extraordinary meeting held on 6 October 2011.</p> <p>4. Declarations of Interest</p> <p>Councillors are requested to declare any personal or prejudicial interests or dispensations granted by the Standards Committee.</p> <p>5. Chairman's Announcements</p> <p>To allow for any Chairman's announcements that may arise.</p>	<p>7:00 pm</p>
<p>6. Cabinet Representative - Councillor Dick Tonge</p> <p>Councillor Dick Tonge, Cabinet Representative for Highways and Transport, will give a brief overview of that area of responsibility. The Chairman will then invite questions from the public.</p> <p><i>(Note: Written questions may be submitted in advance – please email to sharonl.smith@wiltshire.gov.uk by Thursday 2 November 2011)</i></p>	<p>7:05 pm</p>
<p>7. Community Area Transport Group (CATG) Update (<i>Pages 25 - 32</i>)</p> <p>To receive an update and consider any recommendations arising following the CATG meeting held on 19 October 2011.</p>	<p>7:30 pm</p>
<p>8. Area Board Updates</p> <p>Caroline Brailey will feedback on any matters raised at the meeting of the Area Board on 5 September 2011.</p>	<p>7:40 pm</p>
<p>9. Wiltshire Good Neighbour Scheme</p> <p>Helen Lines from Community First will give a presentation on the work taking place within the community area.</p>	<p>7:45 pm</p>

10.	<p>Partner Updates (<i>Pages 33 - 46</i>)</p> <p>To receive any updates from partner organisations:</p> <ul style="list-style-type: none"> a. Wiltshire Police; b. Wiltshire Fire and Rescue Service; c. NHS Wiltshire; d. Pewsey Community Area Partnership (PCAP); <ul style="list-style-type: none"> • The Board will also be asked to endorse the Community Area Plan. e. Parish Councils; f. Pewsey Community Area Young People Issues Group (CAYPIG); g. Extended Services; and h. Pewsey Campus - Shadow Community Operations Board (SCOB) 	7:55 pm
11.	<p>Great Western Hospital - Transfer of Community Health Services</p> <p>To receive an update on the transfer of community health services, including details of service provision at Savernake Hospital.</p>	8:15 pm
12.	<p>Community Issues (<i>Pages 47 - 50</i>)</p> <p>Councillor Stuart Wheeler will give an update on the progress made regarding issues which have been raised with the Area Board.</p>	8:30 pm
13.	<p>Community Area Grants (<i>Pages 51 - 56</i>)</p> <p>To determine any applications for Community Area Grants.</p>	8:35 pm
14.	<p>Urgent Business</p> <p>Time permitting, the Chairman will invite questions and comments on issues not covered elsewhere in the agenda.</p>	8:40 pm
15.	<p>Evaluation</p> <p>Those attending will be asked to give their feedback on the meeting.</p>	8:45 pm
16.	<p>Future Meeting Dates and Close (<i>Pages 57 - 58</i>)</p> <p>To note the Forward Plan attached.</p> <p>The next meeting of the Pewsey Area Board is scheduled for Monday 9 January 2011, 6.30pm at Burbage Village Hall, Eastcourt Road, Burbage SN8 3AJ.</p>	

Future Meeting Dates

Monday, 9 January 2012

7.00 pm

Burbage Village Hall, Eastcourt Road, Burbage SN8
3AJ

Monday, 12 March 2011

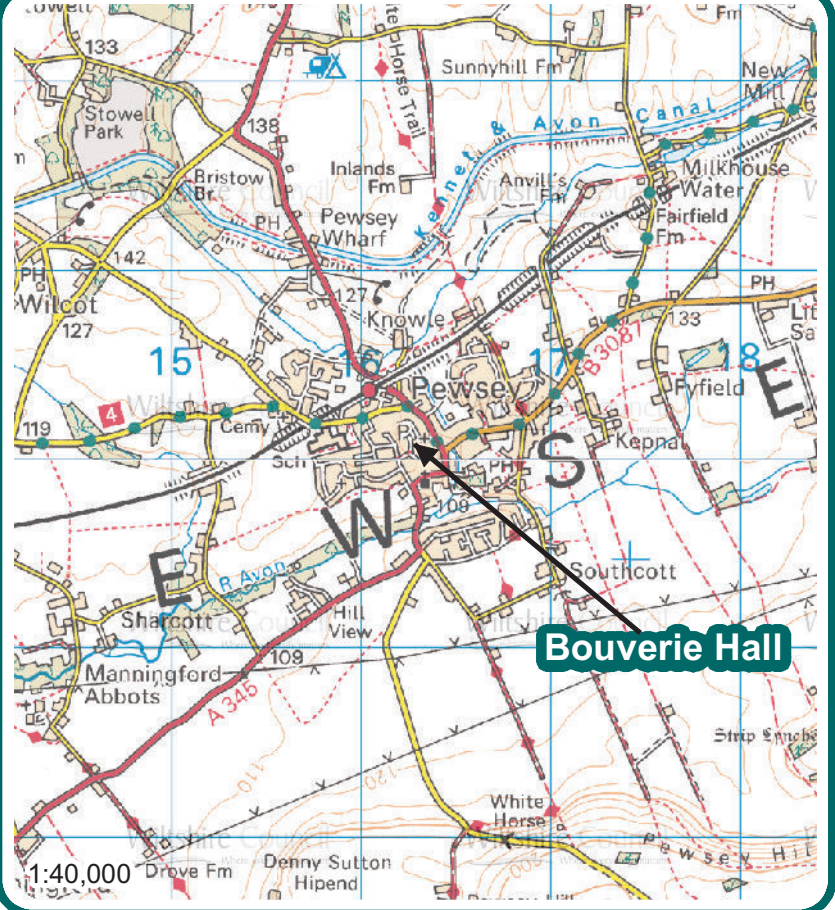
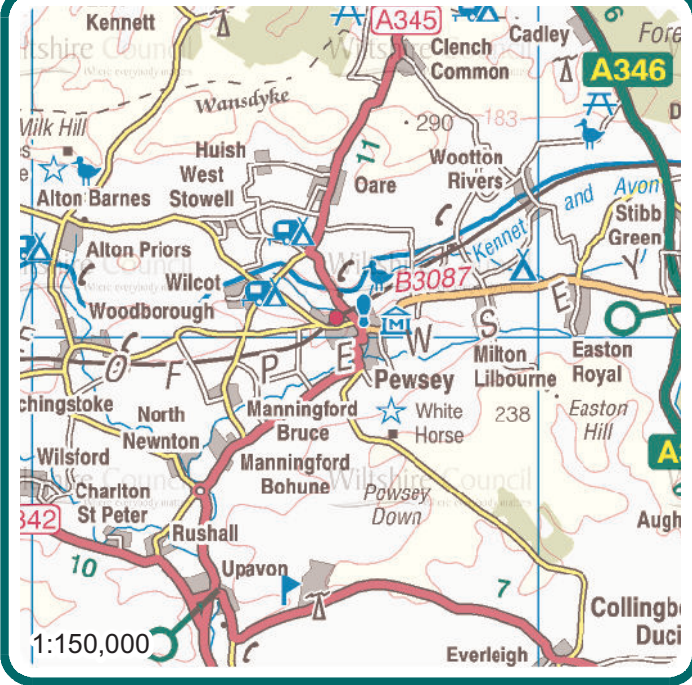
7:00pm

Burbage Village Hall, Eastcourt Road, Burbage SN8
3AJ

Monday 14 May 2011

7:00pm

Coronation Hall, The Green, East Grafton, SN8 3DB



Bouverie Hall
North Street
Pewsey
Wiltshire
SN9 5EQ

Wiltshire Council
 Where everybody matters



MINUTES

Meeting: PEWSEY AREA BOARD
Place: Burbage Village Hall, Eastcourt Road, Burbage SN8 3AJ
Date: 5 September 2011
Start Time: 7.00 pm
Finish Time: 9.00 pm

Please direct any enquiries on these minutes to:

Sharon Smith (Democratic Services Officer), Tel: 01225 718378 or (e-mail) sharonL.smith@wiltshire.gov.uk

Papers available on the Council's website at www.wiltshire.gov.uk

In Attendance:

Wiltshire Councillors

Cllr Jerry Kunkler (Chairman), Cllr Stuart Wheeler (Vice Chairman) and Cllr Brigadier Robert Hall

Cllr John Noeken (Cabinet Member for Resources)

Wiltshire Council Officers

Caroline Brailey, Pewsey Community Area Manager
Sharon Smith, Democratic Services Officer
James Hazlewood, Senior Democratic Services Officer
Bill Parks, Head of Service, Local Highways and Streetscene
Helen Pickett, Highways Management Technician
Anne Huggett, Senior Media Relations Officer
Nicola Gregson, Head of Commissioning, Care, Support and Accommodation

Parish Councils

Alton Parish Council – Steve Hepworth
Charlton and Wilsford Parish Council – Trevor Trigg
Chirton and Conock Parish Council – Stef Robertson
Easton Parish Council – Hew Helps
Grafton Parish Council – Susie Brew, Tom Hatfield
Great Bedwyn Parish Council – Steve Hobson

Ham Parish Council – Susie Eldridge
Marden Parish Council – Peter Bell
Milton Lilbourne Parish Council – Paul Oatway, David Fall, Robert Jones
North Newnton Parish Council – Carolyn Whistler
Pewsey Parish Council – Bob Woodward, Peter Deck
Rushall Parish Council – Colin Gale, John Rogers
Shalbourne Parish Council – Stella Zweck, Peter Blanthorn
Woodborough Parish Council – John Brewin

Partners

Wiltshire Police – Ron Peach
Pewsey Community Area Partnership (PCAP) – Bob King, Stan Bagwell
Bouverie Hall, Pewsey – Martin Clifton
Burbage Village Hall – Martin Hamer
Pewsey Evergreens – Linda Keepence
PHAB Community Transport Scheme – Peter Akrigg
Pewsey Development Centre for Young People – Karen Brown
Wootton Rivers Village Hall Management Committee
Pewsey Shadow Community Operations Board – Curly Haskell, David Line, Caroline Maddocks

Total in attendance: 51

<u>Agenda Item No.</u>	<u>Summary of Issues Discussed and Decision</u>
1.	<p><u>Welcome and Introductions</u></p> <p>The Chairman welcomed everyone to the meeting and introduced the Area Board Members, the officers and the visiting cabinet representative, Councillor John Noeken.</p>
2.	<p><u>Apologies for Absence</u></p> <p>Apologies for absence were received from:</p> <p>Ian Gibbons – Service Director, Wiltshire Council Jim Fletcher – Woodborough Parish Council Nicola Gilbert – Pewsey Primary School Terry Eyles – Pewsey Parish Council</p>
3.	<p><u>Minutes</u></p> <p><u>Decision</u> The minutes of the meeting held on 4 July 2011 were agreed as a correct record and signed by the Chairman.</p>
4.	<p><u>Declarations of Interest</u></p> <p>There were no declarations of interest.</p>
5.	<p><u>Chairman's Announcements</u></p> <p>a) <u>Warm and Well – Free home insulation scheme</u></p> <p>The Chairman introduced the announcement provided with the agenda at pages 21-22.</p> <p>b) <u>Any other announcements</u></p> <p>The Chairman reminded all present that Pewsey Carnival was to take place on Saturday 17 September 2011.</p>
6.	<p><u>Cabinet Representative - Councillor John Noeken</u></p> <p>Councillor John Noeken, Cabinet Representative for Resources provided the Board with a brief outline of his responsibilities which included:</p> <p>Human Resources and Organisation Development ICT Procurement and Commissioning Customer Services</p>

	<p>Shared Services Business Management Programme Business Transformation Legal and Democratic Services Councillor Development Registration Service and Coroners</p> <p>Taking the above areas of responsibility into account, further clarity was provided that the 5 pre existing ICT systems had now been successfully merged into one county wide system. Procurement and commissioning continued to achieve year on year savings and was on target to secure £36m savings over the 4 years of the Business Plan.</p> <p>Goods, Services and Works contract opportunities with Wiltshire Council over the European Union (EU) thresholds are published electronically in the Official Journal of the European Union (OJEU) which can be viewed on the Tenders Electronic Daily (TED) website.</p> <p>The Cabinet Member also confirmed that as part of his business transformation responsibility, there was an ongoing relationship with Cllr Stuart Wheeler in relation to the development of the campus programme.</p> <p>The Chairman thanked Councillor John Noeken for attending.</p>
7.	<p><u>Area Board Updates</u></p> <p>The Chairman invited Caroline Brailey to provide an update on matters raised at the previous Area Board meeting held on 4 July 2011 where the following information was given.</p> <p><u>Locked play areas – Bloor sites in Pewsey</u></p> <p>Wiltshire Council had now taken over the sites and the play areas were now open to the public.</p> <p><u>Kings Corner</u></p> <p>It was understood that the wall had now been demolished and that work will now continue to further remedy the problem.</p> <p><u>Pewsey Parish Council takeover of car parks in Pewsey</u></p> <p>An update had been received from legal department who confirmed that evidence had emerged which caused confusion on the ownership of legal title. The property department had been asked to provide a ‘to scale’ map which would be provided to land registry who, in turn, would be able to clarify land ownership. Once this had taken place the takeover of car parks would proceed.</p>

	<p>Pewsey Parish Council were still not happy that they had not received a reply to their concerns raised in their letter of 13 May 2011.</p> <p><u>Woodborough Road Safety Group</u></p> <p>The Community Area Transport Group met in July where it was agreed that a site visit should be undertaken to provide a clear understanding of the safety issues surrounding the school pick up and drop off points. The local highways team subsequently met with the Transport Group and undertook the site visit during term time to ensure the problem was experienced first hand.</p> <p>Remedial work such as refreshed painting and sign cleaning had been undertaken over the summer period to ensure it was in place prior to the children returning to school. Other options were now being explored which included the potential for alternative routes to school.</p> <p>An update on progress would be provided at a later meeting.</p>
8.	<p><u>Future of Pewsey Area Community Trust (PACT)</u></p> <p>The Chairman welcomed Lee Grafton, Director of the Pewsey Area Community Trust (PACT) to the meeting.</p> <p>Lee explained that the Trust had been established approximately 10 years ago by Wiltshire County and Kennet District Councils. Following fulfilment of all the objectives in place and due to the uncertainty of the Trust following unitary in 2009 it was agreed that the Trust would be dissolved. As a result, all allocated funds to close the Trust had now been paid which left approximately £12k of funding available with an anticipated £25k of outstanding loans to be received.</p> <p>The Pewsey Area Community Trust (PACT) will cease at the end of September and it is proposed that all remaining funds be transferred to the Colin Lampard Trust to allow for the remaining funds to be granted to the local community. Lee Grafton would remain a Trustee.</p> <p>The first meeting of the Colin Lampard Trust is scheduled to take place on 6 September 2011. Following the meeting further details on the process to which funds can be requested would be provided.</p> <p>The Chairman thanked Lee Grafton for his attendance and the work that PACT have achieved over the years and welcomed further information on grant accessibility from the Colin Lampard Trust in due course.</p>
9.	<p><u>Partner Updates</u></p> <p>(a) <u>Wiltshire Police</u></p> <p>Inspector Ron Peach referred the meeting to the written update in the agenda which included:</p>

- The 'Bluz n Zuz' disco held on Friday 8 July had been well received.
- A drive to target beauty spot thefts from vehicles over the summer period included increased patrols by Neighbourhood and Response officers as well as a programme of education for motorists who, in some instances, continued to leave valuables in clear sight in unattended vehicles.
- Structural changes within the response model of Emergency Response is expected to be take effect next month which would include clustering responses around hubs to improve administration, meet demand and improved profile. A more remote working approach plus Airwaves Radio Sets (ARS) should allow for a more consistent cover.

In most cases the response time criteria (set at within 20 minutes in rural locations) was being achieved.

Further partnership working was also expected which could include, for example, shared custody facilities with neighbouring counties.

- Upon questioning the high increase of cases in relation to Non Dwelling Burglary, clarification was provided that the Priority Crime Team were working to reduce this figure. It was acknowledged that the high figure was in part due to the high levels of theft of metal, the price of which had significantly increased over recent months.

(b) Wiltshire Fire and Rescue

Cllr Robert Hall presented the written update provided by Mike Franklin of the Wiltshire Fire and Rescue Service.

In addition clarification was provided that in conjunction with local appliances sent to fire call-outs, facilities from outside of the County were also used where required with 90% of all call-outs responded to within 20 minutes.

(c) NHS Wiltshire

The written updated provided by NHS Wiltshire, as detailed on page 29 of the agenda was noted.

(d) Pewsey Community Area Partnership (PCAP)

Bob King, Chairman of PCAP gave an update on the work of Partnership. At the last meeting held it was agreed that an e-survey would be circulated to parish councils and individuals to ascertain the effectiveness

of PCAP and the direction in which the Partnership should take in future.

PCAP will be holding its next meeting in Rushall on Thursday 22 September.

Within this item, a statement from Cllr Stan Bagwell of Enford Parish Council was given in relation to Wiltshire Council's Core Strategy on Transport where concern was raised that the A345 was not taken into consideration as a highly used highway from the north to the south of the County. A copy of the statement can be found attached to these minutes.

The statement had been presented to the Tidworth and Amesbury Area Boards in July and a copy also sent to Clare Perry MP.

The Cabinet Member for Resources confirmed that the latest draft of the Core Strategy did not refer to the A345 nor did it give much precedence to the A303 but that he had raised his concerns with both Strategic Planning Officers and the Inspectorate in relation to this.

A copy of the response to the Planning Inspector's invitation of 5 August to comment on the implications of the July 2011 National Planning Policy Framework (NPPF) and which took into consideration the comments made by Amesbury Town Council on the Wiltshire Core Strategy was presented.

Upon questions received in relation to the budget for Highways set by the Council, clarification was provided that the setting of the budget had to take into consideration the needs of the county as a whole and that any increase would result in a reduction of funding elsewhere.

The Community Area Manager (CAM) addressed the Board with details of the light switch-off project where nominations were sought from PCAP on areas which could take part. An application has now been received from the village of Huish and details of the proposal from within the Parish were presented.

The Board, upon vote, were in favour of the proposal to switch off 3 lights between the hours of midnight and 5:30am. The Highways Department would now be requested to make an assessment on the viability of the proposal.

(e) Parish Councils

No further updates were received from Parish Councils.

(f) Pewsey Community Area Young People's Issues Group (CAYPIG)

The last meeting of the CAYPIG focused discussion on the 13-19

Strategy.

The next meeting will take place at 7pm on 21 September at the Shack where the needs of young people in the area will be considered. New members would be welcome to attend.

(g) Extended Services

There was no update provided.

(h) Pewsey Campus – Shadow Community Operations Board

The Chairman of the Pewsey Shadow Community Operations Board (COB) provided a brief presentation on the work undertaken to date.

This included that two meetings of the COB had been held to date on 11 July and 1 August respectively. The next meeting is hoped to take place at the end of September.

The initial part of the public consultation to seek the opinions of residents was now well underway with approximately 6,000 mail shots within the area sent and a further 100 questionnaires sent to recognised groups such as parish councils, primary schools, secondary schools and community groups and bodies. All residents should now have received a copy of the questionnaire but additional copies were available at the meeting for those wishing to take one.

Subject to approval at each stage the following timelines are currently being worked towards:

- November 2011 - Formal consideration of the proposal by the Area Board
- January 2012 – Approval by Wiltshire Council Cabinet
- April 2012 – Commence construction
- April 2013 – Planned completion date

Following closure of the consultation period and upon consideration of the completed questionnaires a further more detailed consultation will be undertaken.

An extraordinary meeting of the Area Board will be arranged for the beginning of October where details of the initial consultation will be presented.

The Chairman thanked Bob Woodward for his presentation and encouraged all to complete the questionnaires.

10.

Help to Live at Home

Nicola Gregson, Head of Commissioning, Care, Support and Accommodation gave a presentation on the Council's programme to improve services to older people and vulnerable adults in Wiltshire.

Work had been undertaken over the last two years to ensure the services provided met the needs of the population including a detailed consultation.

The feedback received concluded that there were too many organisations to deal with resulting in confusion over the choices to take and where to get help if needed. It was also felt that money was wasted on duplication because of this.

There was also concern raised regarding crises at night and the importance 'that little bit of help' had both in terms of maintaining independence and helping to alleviate loneliness and isolation. Many of those in care homes stated that their preference would have been to remain at home where possible.

Within the Pewsey area at present there were 45 sheltered housing units within Aston Court and Aston Bungalows with 18 extra care units within Meadow Court. Approximately 16 people currently received domiciliary care at home in Pewsey itself with 119 within the wider Pewsey area.

In order to improve services a new service for people living at home had been commissioned with Leonard Cheshire appointed a 7 year contract today for the local area. Somerset Care, Complete Care and Ridgeway would be the other providers for areas across the County.

Local NHS staff would be working with Leonard Cheshire to ensure the right people are fulfilling the right role and to ensure that they were encouraged to work with existing community organisations and the voluntary sector.

A new telecare and response service in conjunction with the health service would also commence shortly which would also provide more sophisticated equipment at home. One service would be available in the future across the County to provide equipment and a practical support service. It was hoped that the new service would commence in November following the appointment of the service provider.

Following questions received, it was confirmed that Community First Responders would be considered within the new service provision structure.

Much had been done to broaden awareness of the new services, including radio interviews, details provided in the Wiltshire magazine to all residents as well as current customers contacted. However the Care, Support and Accommodation team would welcome any further ideas to encourage wider awareness.

The Chairman thanked Nicola Gregson for the presentation.

11.	<p><u>Pewsey Voices</u></p> <p>The CAM provided the Board with an update on the project to engage with rural families on low incomes.</p> <p>The Board was reminded that the project arose last year when Wiltshire Council and the Area Boards team applied for a Performance Rewards Grant to encourage public engagement from those not always heard within a community.</p> <p>A decision was taken to focus on the group of rural families on low incomes to establish what issues were of importance. A stakeholder meeting was held which included Credit Union, CAB, childrens centre, housing organisations and the police to give a view on what the issues were thought to be. The next stage will be to approach those residents within the group identified to ascertain whether their priorities indeed matched. An update will be provided to the Board with further details at a later stage.</p>
12.	<p><u>Community Area Transport Group (CATG) - update</u></p> <p>The Community Area Transport Group (CATG), which was set up last year to consider highway schemes had its latest meeting on 20 July 2011.</p> <p>The Group is made up of volunteers, selected by the Area Board, who make recommendations to the Area Board to access a small grant set aside for highways schemes.</p> <p>A report providing details of the meeting held on 20 July was provided with the agenda under pages 35-38. Although there were no recommendations arising from the meeting held it was agreed that the CAM would write to those who have submitted scheme requests to ask that they are resubmitted through the issues system where still valid to ensure they were being dealt with by the CATG.</p>
13.	<p><u>Queen Elizabeth II Playing Fields Challenge</u></p> <p>The Board were asked to select nominations for sites to be put forward for the Queen Elizabeth II Playing Fields initiative. The initiative would ensure that those successful sites would remain protected in perpetuity.</p> <p>Although four sites had initially been put forward one had been removed as it was felt too small to be submitted for consideration.</p> <p>Upon discussion it was agreed that all 3 of the remaining sites would be put forward for the initiative. These were:</p> <ul style="list-style-type: none"> • Alton Barnes Playing Field • Pewsey Football Pitch (off Wilcot Road); and • Pewsey Broomcroft Road Open Space. <p>An update on the outcome would be provided in due course.</p>

14.	<p><u>Community Issues</u></p> <p>Councillor Stuart Wheeler updated the meeting on the Community Issues which had been received by the Area Board.</p> <p>Councillor Wheeler referred to the written update provided in pages 39-40 of the agenda.</p> <p>In addition, the following clarifications were made:</p> <ul style="list-style-type: none"> • A review on 'C' and unclassified roads was due to take place imminently. Due to limited resources only 2 roads in each of the area board areas would be reviewed per year. CATG will look at the proposals submitted and produce a priority list accordingly. • It was understood that Network Rail had been contacted to discuss whether additional parking could be provided at Great Bedwyn Station to help alleviate parking problems. Great Bedwyn Parish Council had been contacted by Network Rail who had asked them to contribute £5k towards the cost of assessment. The Knapp Tenants Association have indicated that they were not happy with the proposal by Network Rail. <p>A meeting will take place on 14 September where the issues of commuter parking at The Knapp will be discussed.</p>
15.	<p><u>Community Area Grants</u></p> <p>The Area Board considered a number of applications for Community Area Grant funding. The Chairman invited the local Councillor to introduce each application, following which a representative of the applicant was given an opportunity to give a brief overview of their project to the Area Board.</p> <p>In considering the applications members of the Board were asked to note the following information:</p> <p><u>Application received from Milton Lilbourne Village Hall</u></p> <p>The grant requested had now been reduced from £3,875 to £2,343.</p> <p><u>Application received from Wooton Rivers Village Hall</u></p> <p>There was a typing error in relation to the grant figure quoted within the agenda. The correct figure, as provided within the application itself, should have read £4,976 and not £1,976.</p> <p><u>Decision</u> Wiltshire Geology Group was awarded £500 towards Fact Sheets, two guided walks and widening understanding of the nature of chalk habitats.</p>

	<p><u>Reason</u> <i>The application met the Community Area Grants criteria for 2011/12 and would support helping people to have opportunities for environmental learning.</i></p> <p><u>Decision</u> Milton Lilbourne Village Hall was awarded £2,343 towards the resurfacing of the concrete entrance to the village hall.</p> <p><u>Reason</u> <i>This application met the Community Area Grants criteria for 2011/12 and would support small business, voluntary organisations and community groups.</i></p> <p><u>Decision</u> Sunflowers of Grafton was awarded £3,987 towards work on the school buildings and marketing activities.</p> <p><u>Reason</u> <i>The application met the Community Area Grants criteria for 2011/12 and would contribute to the resilient communities vision of the Local Agreement for Wiltshire.</i></p> <p><u>Decision</u> Wooton Rivers Village Hall was awarded £4,976 towards repairs to the hall roof with the condition that match funding is in place before the grant is claimed.</p> <p><u>Reason</u> <i>The application met the Community Area Grants criteria for 2011/12 and would help to provide a thriving leisure and cultural environment that brings the community together.</i></p>
16.	<p><u>Urgent Business</u></p> <p>An extraordinary Area Board meeting would be arranged in October following the initial consultation exercise in relation to the Pewsey Campus.</p>
17.	<p><u>Future Meeting Dates and Close</u></p> <p>The next meeting of the Pewsey Area Board was scheduled for Monday 7 November 2011, 7pm at Bouverie Hall, North Street, Pewsey, Wiltshire SN9 5EQ.</p> <p>A date for the extraordinary meeting to be held in October 2011 will be circulated once confirmed.</p> <p>The Chairman thanked everyone for attending.</p>

TIDWORTH AREA BOARD MEETING JULY 2011.

AMESBURY AREA BOARD MEETING JULY 2011

WILTSHIRE CORE STRATEGY 2011-2026 : THE A345 FOR THE NEXT 15 YEARS.

Chair.

With regard to the A345 and Wiltshire Councils Core Strategy on Transport 2011-2026.

It might not be recognised by all here tonight, that the A345 does not come into the Councils Core Strategy as any kind or type of highly used Highway North to South through Wiltshire County and this will be for the next 15 years.

A collective response to this lack of traffic information held by Wiltshire Council is being prepared and all Town and Parish Councils and others who are affected by this problem of Through Traffic North to South from the A303/M3 through to the A4/M4.

There are great concerns by all these Councils (listed below) along the A345 through the Pewsey and Avon Valleys, in that Wiltshire Council has seen it necessary to omit the A345 from every part of this New (Vision) Core Strategy regarding Highway Transportation across Wiltshire..... The Question is WHY?

The Councils who have very great concerns are.

Durrington Town Council.

Figheledan Parish Council.

Netheravon Parish Council.

Enford Parish Council.

Upavon Parish Council.

Manningford Parish Council.

Pewsey Parish Council.

-2-

Wilcot/Huish/Oare Parish Council

Marlborough Town Council.

There is firm evidence that the A345 is being used by ALL SORTS of vehicular and Heavy Goods traffic along this small fragile unsuitable Drovers Road as a short cut North to South across Wiltshire. The Council must either recognise this situation or declassify this "A" road to a "B" road and remove the large HGVs signs (Going North) at Manningford and Sharcott which are at present directing all Heavy Goods Vehicles through Pewsey Village up to the A4 at Marlborough and beyond. Then they should Re-sign the Road at the A303 Countess Roundabout Amesbury and the A4 at Marlborough as being Unsuitable for LARGE Heavy Goods Vehicle use.

The file on this situation will be submitted by e-mail to the Wiltshire Spatial Core Strategy Team on the 28th July 2011.

Thank you for listening.

Stan. W. A. Bagwell Enford Parish Council (Highways)

Chair. Transport and Road Safety Sub Group. Pewsey Community Partnership.

MINUTES

Meeting: PEWSEY AREA BOARD
Place: Coronation Hall, The Green, East Grafton, SN8 3DB
Date: 6 October 2011
Start Time: 7.00 pm
Finish Time: 8.20 pm

Please direct any enquiries on these minutes to:

Sharon Smith (Democratic Services Officer), Tel: 01225 718378 or (e-mail) sharonL.smith@wiltshire.gov.uk

Papers available on the Council's website at www.wiltshire.gov.uk

In Attendance:

Wiltshire Councillors

Cllr Jerry Kunkler (Chairman), Cllr Stuart Wheeler and Cllr Mark Connolly

Wiltshire Council Officers

Caroline Brailey, Pewsey Community Area Manager
Ian Gibbons, Service Director for Legal and Democratic Services
Rachel Goff, Project Manager
Mark Stone, Programme Director
Sharon Smith, Democratic Services Officer

Parish Councils

East Grafton Parish Council – Tom Hatfield
Grafton Parish Council – Alison Comyn
Manningford Parish Council – Bernard Gaskin
Pewsey Parish Council – Pat Keers, Brian Tubb
Woodborough Parish Council – Jim Fletcher

Partners

Extended Services – Alison Rollinson
Pewsey Community Area Partnership (PCAP) – Bob King

Pewsey Chamber of Commerce, Patrick Wilson
Shadow Community Operations Board (SCOB) – Bob Woodward, Curly Haskell,
Wendy Spencer, Caroline Maddocks, David Line
Wiltshire Police – Ron Peach

Total in attendance: 26

<u>Agenda Item No.</u>	<u>Summary of Issues Discussed and Decision</u>
1.	<p><u>Welcome and Introductions</u></p> <p>The Chairman welcomed everyone to the meeting and introduced the Area Board Members.</p>
2.	<p><u>Apologies for Absence</u></p> <p>Apologies for absence were received from Cllr Robert Hall. Cllr Mark Connolly substituted.</p> <p>Apologies were also received from Peter Deck (Pewsey Parish Council) and Hew Helps (Easton Parish Council).</p>
3.	<p><u>Declarations of Interest</u></p> <p>There were no declarations of interest.</p>
4.	<p><u>Chairman's Announcements</u></p> <p>There were no announcements.</p>
5.	<p><u>Pewsey Shadow Community Operations Board (COB)</u></p> <p>The Pewsey Shadow Community Operations Board (SCOB) was formed by the Area Board on 9 May 2011 to examine the opportunities of 'localising' and maximising on time-sharing of some council services.</p> <p>The SCOB members were appointed on 4 July and subsequently undertook a consultation to seek the views of local residents.</p> <p>A report providing further detail of the work undertaken by the SCOB and working proposals for the next stage of the consultation was circulated prior to the meeting. The Programme Director was in attendance to present the report and provided the following information.</p> <ul style="list-style-type: none"> • That a campus was a building or a collection of buildings decided by the community area and with the support of the community that was intended to remove approximately 300 operational buildings currently in existence to be replaced with a much lower figure of approximately 30. • There was a potential to co-locate with partners and voluntary organisations with the support of the police authority. • That the campus initiative formed part of the Council's long term ambition for greater community engagement in line with national policy.

- That the core criteria for all campus buildings included a shared reception, community space, accessible IT provision, personal care and catering facilities.
- There were several pilot areas across the county, including Corsham, Melksham, Wootton Bassett, Cricklade, Salisbury and Calne in addition to Pewsey.
- All funding decisions in relation to the final campuses would be decided by Cabinet but would be based on the plan steered by the area boards views and those of the SCOB.

Upon questioning it was confirmed that Corsham, Melksham and Salisbury were at the forefront of progress made to date. Corsham and Melksham had completed business cases which were due to be submitted to Cabinet for consideration in November.

The Programme Director handed over further presentations to the Chairman of the Pewsey Area SCOB who confirmed that although the library facilities were fit for the future, leisure and youth centre facilities were not.

The consultation process that had been undertaken included the despatch of 6,000 questionnaires with an additional 100 plus sent to targeted groups including parish councils, primary and secondary schools, churches, identified sports groups and youth groups.

The responses received were fairly well spread across the Pewsey area with 1,063 responses received equating to approximately 18%.

Several key areas were indentified, including:

- 71% favoured a Campus which included several council services
- 75% in favour of a modern Leisure Centre
- 64% in favour of a library
- 62% favoured a provision for youth services
- 37% in favour of a playgroup
- 34% in favour of a skateboard park
- 28% in favour of a luncheon club

Of the 1,063 responses, 600 individual comments had been received in relation to the top three services required.

Approximately one third of respondents lived east of the Pewsey area. With this in mind it was recognised that these residents may in some instances, consider Hungerford as their local service provider and, as such, may benefit from a satellite facility for services.

The key findings also indicated that a split campus approach would be beneficial to most residents and that further investigation would take place in relation to the satellite facility to accommodate the needs of those residents east of the Pewsey area.

Upon preliminary analysis of the initial survey three broad themes emerged; modern leisure facilities, improved youth services and services for adults and the elderly. The following working proposals were therefore presented for the Area Board's consideration:

- To further explore the potential for a split campus site, comprising:
 - A modern leisure centre
 - A full range of indoor and some outdoor facilities
 - A modern youth centre
 - A community services campus facility located adjacent to the present Leisure Centre and Pewsey Vale School
 - The possibility of a satellite outstation
 - The existing Library

Upon approval of the working proposals the SCOB would look to conduct a second round of consultations with targeted groups including potential 'open days/evenings' throughout October and November to further source information from residents on the community based services required.

Clarification was provided that there were currently 14 SCOB's working across the county all of which were voluntary groups. Although no funding was provided, the Council did assist SCOBs in their work in resource terms which included the costs associated with the circulation of the questionnaires.

The provision of further education services was also raised where clarification was given that there was an emphasis on flexible space within campuses. An example related to the facilities at the Olympiad Leisure Centre in Chippenham which was used for adult social care during the day and social groups in the evening to ensure best use of the building.

The inclusion of a centralised reception area within each campus was hoped to ensure a 'one stop' approach to Council services that would benefit the public. It was hoped that the next stage of the consultation would allow residents to raise core service requirement needs from within these campuses.

Although campuses would allow for an internet based service, an emphasis would be placed on repersonalising the service to ensure a stronger community base existed.

	<p>The business cases arising from campus proposals would be submitted to Cabinet for consideration as they developed across the County. The Chairman of the SCOB requested that details of the programmes for all the campuses across the County be provided once available.</p> <p>The timeline currently being worked to, all of which were subject to approval at each stage were as follows:</p> <ul style="list-style-type: none"> • SCOB draft working proposals to Area Board following consideration of the consultation – 6 October 2011 • Second phase of consultation – October to end of December 2011 • Formal consideration of the final proposal by Area Board – January 2012 • Formal approval by Cabinet – January/February 2012 • Anticipated construction commencement – April/May 2012 • Indicative planned completion date – April 2013 <p>Decision:</p> <p>To note the Pewsey SCOB report;</p> <p>To approve the working proposals put forward for a split-site campus;</p> <p>To endorse the further steps proposed in the Pewsey SCOB work programme; and</p> <p>To consider a specially convened Area Board meeting, if appropriate, to consider detailed proposals from the Pewsey SCOB for campus provisions in the Pewsey Community Area.</p>
6.	<p><u>Community Asset Transfer</u></p> <p>A report was presented to the Board requesting that an application submitted for the transfer of the former playing field at the former Grafton School to Grafton Parish Council in accordance with Wiltshire Council’s Community Asset Transfer Policy be considered.</p> <p>Concern was raised as to whether the pre-school, who were expected to use the facilities of the School, would still have access to the former playing fields upon its transfer. Clarification was provided that this would remain the case although approval would instead need to be sought from the Parish Council themselves rather than Wiltshire Council.</p>

	<p>Upon vote all were in favour of the transfer.</p> <p>Decision:</p> <p>To approve the transfer of the former playing field at Grafton School to Grafton Parish Council in accordance with Wiltshire Council's Community Asset Transfer Policy.</p>
7.	<p><u>Future Meeting Dates and Close</u></p> <p>The next meeting of the Pewsey Area Board was scheduled for Monday 7 November 2010 2010, 7pm at Bouverie Hall, North Street, Pewsey, Wiltshire, SN9 5EQ.</p> <p>The Chairman thanked everyone for attending.</p>
8.	<p><u>Urgent Business</u></p> <p>There were no urgent items.</p>

COMMUNITY AREA TRANSPORT GROUP
MEETING HELD ON WEDNESDAY 19 October 2011

1. Purpose of the Report

To provide an update and recommendations to Pewsey Area Board from the meeting of the Area Transport Group meeting held on Wednesday 19 October 2011.

Attendees

Robert Hall – Pewsey Area Board	Paul Bollen – Wiltshire Council
Terry Eyles – Pewsey Parish Council	Peter Hanson – Wiltshire Council
Colin Gale – Rushall Parish Council	Caroline Brailey – Wiltshire Council
David Leighton – Sustrans	Vince Logue – Wiltshire Police
Spencer Drinkwater – Wiltshire Council	Jerry Kunkler – Pewsey Area Board
Mark Stansby – Wiltshire Council	Stanley Bagwell - PCAP

2. Background

The purpose of this group is to prioritise requests for integrated transport schemes, and to make recommendations to the Pewsey Area Board on schemes to be funded from its limited transport budget. The group's remit is also to look at current highway issues raised with the area board.

3. Main Considerations

3.1 Feedback on current priorities

Pedestrian Access to Pewsey Station – application for substantive funding

Spencer explained that the application had been unsuccessful, although it wasn't rejected. The scoring was based on cost:benefit, deliverability and the contributions made towards schemes. There were 11 bids, 5 were funded 4 were rejected. Caroline and Jerry explained that they have met a representative from First Great Western to ascertain if they may be willing to contribute to the scheme. At the moment it is unlikely as First Great Western are about to tender for the franchise from 2013 although she would ask. She would provide details of Network Rail as they may be willing to contribute.

Spencer explained that Wiltshire Council has made an expression of interest to the Department for Transport regarding a Local Sustainable Transport Fund bid around improving Wiltshire's rail offering. Wiltshire Council will be submitting its bid in February 2012 for funding rail improvements in the County which may include improving access to stations. It might be possible therefore that some funding be made available for this

scheme in the future. It was agreed to recommend to the area board that this scheme be kept as priority one although on hold at the current time.

The group were reminded of a potential scheme costing £5000 which would be for improved signage around the station to increase pedestrian safety. It was discussed and agreed that this would not be of substantial benefit and that the funding be put to other schemes.

The group agreed to recommend to the area board that the £9,597.54 put aside for the scheme be spent on priority schemes that have already been identified and can proceed this financial year.

High Street Great Bedwyn

Caroline confirmed that the parish council have accepted the scheme as proposed, which would improve pedestrian visibility when crossing Brook Street. The draft scheme has been costed at £4,500. It was suggested that the parish council be asked to contribute towards the scheme with a sum of £500. Caroline would write and ask if they would be able to do this.

It was agreed to recommend that the area board agree that the scheme go ahead and contribute £4,000 towards it.

Action: Caroline to write to the parish council to ask if they are able to contribute £500 towards this scheme.

A342 Rushall

Local agreement has now been reached on a scheme. The parish council are making a contribution to enable bollards to be installed which will prevent cars from parking alongside the path. Colin explained that the path doesn't go as far as first hoped and that they are seeking an additional £4,043. The parish are contributing £3,880. £15,156 has already been agreed by the board for this scheme.

It was agreed to recommend to the area board that a further £4,043 be put towards this scheme which will allow the path to extend as far as the Old Barnyard.

Wilcot Road One-Way System

A metrocount has been done which shows the numbers of vehicles travelling the wrong way – this is in addition to any which may be turning around having realised their mistake. The results were as follows:-

Over the course of 12 days

Time Period	Frequency
06:00 – 10:00	18
10:00 – 14:00	19
14:00 – 18:00	16
18:00 – 22:00	14
22:00 – 02:00	13
02:00 – 06:00	7

Mark explained that there is scope to change the kerb alignment with Old Hospital Road. This will include a priority build-out to disrupt in-bound flow of traffic. The costs of this scheme would be approximately £8,000 – this includes the cost of a topographical survey (£1000) which would need to be done initially to give the true cost of the scheme.

It was agreed that the group recommend to the area board the sum of £1,000 for a topographical survey.

Action: Sgt Logue agreed to carry out some additional enforcement.

Action: Mark to arrange the metro count survey and cost a kerb work scheme.

Upavon Footpath (Grey Flags)

There has been no change since the last meeting – permission from the landowner has still not been given. It will remain on the priority list on hold.

3.2 New Requests/Issues

- **Speeding/danger at Huish Corner, Oare – despite CSW**

The parish council have asked for consideration of a mini-roundabout or flashing signs to calm traffic at this area. There is community speed watch further up the road but it is felt that this area is still dangerous due to the nature of the junction.

Action: Mark Stansby agreed to go to the site and report back to the next meeting.

- **Road Improvements at the Swan Junction, Wilcot**

The parish council have asked for consideration of a mini-roundabout and parking controls to make the road safer.

The group rejected the idea of a mini-roundabout – this would be costly, and if there were to be one there could be no parking anywhere close to it.

Sgt Logue agreed to have a look at the area to establish if any road traffic laws were being breached by inconsiderate parking.

Mark Stansby agreed that there would be some tweaking of the give way lines, but it couldn't be moved back considerably due to the camber of the road.

Parking restrictions could be put in place but this would be the responsibility of the parish council, under the new process for parking and waiting restrictions.

The group agreed to recommend to the area board that this scheme request be rejected on the above grounds, but that some tweaks would be made to white lines, and that the parish council be invited to request some parking restrictions in the interests of road safety.

Action: Sgt Logue to investigate the site, Caroline to update the issues system

- **Extension of 40mph limit from Oare to Prospect**

Mark advised that the speed limit review has been completed and that no further requests would be considered. However as this area is being recommended to be changed from 60 to 50 there will be an opportunity for the parish council to object when it is formally advertised. Mark said that the review had been very thorough and consistent and this stretch does not meet the criteria for a 40mph limit.

Action: Caroline to update the issues system

- **Woodborough – new crossing**

Caroline explained that the Woodborough Road Safety Group had submitted a community area grant application to the area board but that she had been advised by her manager that this should come through CATG, and if necessary CATG could apply through a councillor application for funding from the area board. The application did not include any detail of design or cost but that they were seeking £5000 towards an estimated cost of £10,000. This is to enable a safe crossing area from the new path that is hoped to be installed through the field from the social club.

The group discussed the proposal and agreed that it was not possible to allocate any funding due to the scheme not being fully developed. Mark said that the crossing itself would be of direct benefit to the school, rather than of benefit to the wider community and should therefore be incorporated in the Taking Action on School Journeys School Travel Plan process. However the calming measures are something that the CAT group could consider.

Mark agreed to carry out some preliminary design and estimate of cost and submit to the next meeting. It was however felt that the next meeting would be too late and therefore:-

The group were supportive of the aims of the Woodborough Road Safety Group and to include the scheme in its list of priorities. The group agreed in principle that a request for funding towards an extension of the building out and installation of a new build out could be made directly to the area board's 9th January meeting by way of a councillor led application – subject to preliminary design and costing provided by Mark Stansby.

- **Speeding, Ball Road**

A resident has submitted an issue in relation to speeding along this road. It was agreed that the parish council should be made aware and ask for its authority to carry out a speed count survey.

Action: Caroline to update the issues system and contact the parish council

3.3 Review Priority List

The group went through the list. Parish Councils have been written to and asked if they still wish historical requests to be considered. Great Bedwyn have responded with the Brook Street scheme which is mentioned above, but the other three on the list have not been re-submitted so it was agreed that these could be removed. Caroline is still waiting to hear back from Alton Parish Council and requested that more time be given before removing these. All items remain in the priority order previously agreed –

Woodborough to be added as priority 6 although not yet scored. Spencer will score it in the same way as those that were on the original list.

The complete list is included as Appendix 1 to this report.

3.4 New Delegations to CATG

- SID allocation – each area board is now in control of its own SID device – however there is criteria which needs to be met, which is that a speed survey must indicate that the 85%ile is above 39 or 49 for these to be able to be used. However there are some historical sites which have been provided with SIDS and the area board needs to agree if it wishes these sites to be reassessed. The sites needing to be reassessed (or taken off the list) are:-

Milton Lilbourne
Marlborough Road Pewsey

Sites which qualify already – Alton Road Wilcot and Andover Road Upavon.

Colin said that Rushall has had a SID in the past but is not on the list. Caroline explained that areas which do speed watch and record above 29 speeders in one session also qualify for the SID so this may be the reason but she would find out.

It was agreed to recommend to the area board that Milton Lilbourne and Marlborough Road, Pewsey be reassessed.

Action: Caroline to find out why Rushall was not on the list.

- Review of C and unclassified roads – each area board will be given a list of roads which will be scored by highway officers first. Each area board can put forward two roads for assessment per year. The area boards needs to liaise with neighbouring community areas as many roads will be in more than one. Roads with 30mph limits will not be considered until the pilot 20mph scheme has been considered, although limits may be extended. The lists would be brought to the CATG groups from April 2012.
- Waiting and Parking Restriction Review – any request for waiting or parking restrictions should be directed to the relevant town and parish council and they will submit requests to the council once a year. CATG's may need to be involved if parish council's opt out.

4. CATG Recommendations to Pewsey Area Board

Pedestrian Access to Pewsey Station

It is recommended that the £9,597.54 that was put aside for the scheme be spent on priority schemes that have already been identified and can proceed this financial year.

Brook Street/High Street, Great Bedwyn

It is recommended that the scheme go ahead and contribute £4,000 towards it.

Rushall

It is recommended that a further £4,043 be put towards this scheme which will allow the path to extend as far as the Old Barnyard.

Wilcot Road, Pewsey

It is recommended that the sum of £1,000 be put towards a topographical survey.

Swan Junction, Wilcot

It is recommended that this scheme request be rejected, but that some tweaks would be made to white lines, and that the parish council be invited to request some parking restrictions in the interests of road safety.

Woodborough

It is recommended that the board receive design and costings for traffic calming measures at its next meeting and if appropriate, a councillor led application for a financial contribution.

SID site allocation

To recommend that Milton Lilbourne and Marlborough Road, Pewsey be reassessed.

Date of next meeting

Wednesday 22 February 2.00 pm – Pewsey Parish Office

Report Author: Caroline Brailey, Pewsey Community Area Manager

Tel No: 01225 718609

E-Mail: caroline.brailey@wiltshire.gov.uk

No unpublished documents have been relied upon in the preparation of this report

Scheme Requests

AB Priority	Street / Area Location		Town / Village	Amount needed	Amount Set aside	Notes
1	Pewsey Station (North Street)	Safe pedestrian access to station	Pewsey	65000	0.00	On Hold
2	High Street, Great Bedwyn	Build-out opposite Farm Lane, High Street	Great Bedwyn	4,500	4,000	Recommend to proceed - requesting £500 from PC
3	A342 Rushall	Footpath from village hall to Old Barn Yard	Rushall	19199.46	15,156.46	Recommend to proceed - requesting an additional £4,04
4	A345 Grey Flags (Pewsey Road) Up	Phase II of footpath	Upavon	27974	0	On Hold
5	Wilcot Road one-way system	Improvements to road layout/signage to prevent people driving the wrong way	Pewsey	8000	1000	Recommended to proceed with topographical study

	Woodborough School	Traffic calming	Woodborough			Site visit, assessment and costings
	A345 Prospect	Footway between Prospect and Pewsey Wharf	Pewsey		0	Needs approval from parish council
	Honeystreet/Alton Barnes	Provision of footway from Honeystreet Bridge to Alton Barnes	Honeystreet/Alton Barnes		0	Waiting for confirmation from parish council
	A345 Huish Corner	Traffic calming	Oare		0	Site visit
	Wilcot Rd/Alton Road	Roundabout at crossroads by Golden Swan pub	Wilcot		0	recommend that this scheme be rejected
	C8 Alton Barnes	Traffic calming	Alton Barnes		0	Waiting for confirmation from parish council
	C38 Honeystreet	Traffic calming	Honeystreet		0	Waiting for confirmation from parish council
	A345 Sunnyhill Lane to Prospect	Footway	Oare		0	
	C8 Coate Road East	Traffic calming	Alton Priors		0	Waiting for confirmation from parish council

Crime and Community Safety Briefing Paper
Pewsey Community Area Board
7th November 2011



1. Neighbourhood Policing

Team Sgt: Vincent Logue

Pewsey West Team

Beat Manager – PC Richard Barratt

PCSO – Helen Ringstead

Pewsey East Team

Beat Manager – PC Catherine Hollands

PCSO - Coralie Nash

2. NPTs - Current Priorities & Consultation Opportunities:

Up-to-date details about Neighbourhood Policing Teams including team membership, current priorities and forthcoming community consultation events can be found on our Wiltshire Police Website.

Visit the new and improved website at: www.wiltshire.police.uk

3. Police Authority Representative:

Mrs Gill Mortimer is a member of the Wiltshire Police Authority and has the responsibility for overseeing matters in the community area.

Please contact via Wiltshire Police Authority Tel. 01380 734022 or <http://www.wiltshire-pa.gov.uk/feedback.asp>

4. Performance and Other Local Issues

Crime spikes from last year continue to work their way out of this year's figures which are now beginning to reflect current performance. Most crime areas have fallen significantly with the obvious exception of non-dwelling burglaries which remain a problem as travelling criminals target often isolated workshops and sheds looking to steal scrap metal, plant or fuel. The problem goes beyond local and county boundaries and is unlikely to diminish due to the high value of scrap and diesel fuel. Whilst this situation continues enhanced security and vigilance is required, with the reporting of any suspicious activity immediately to the police.

The number one Force priority is to reduce and detect violent crime. You will see from the performance figures that Pewsey area has seen a reduction in violent crime with an unprecedented 67% detection rate, which is great news!

More good news - In the last year Wiltshire police as a whole has achieved the highest reduction in violent crime in the Country, achieving a 21% reduction.

Pewsey Carnival

The Wine Race presented no policing issues. The event appeared to be well organised and there was a good family atmosphere. The 'Wheelbeero' Race and was very similar although one offence of criminal damage was reported and in the early hours someone set alight to one of the wheel barrow floats causing the fire service to be called out.

On Carnival night the local police were supported by 17 Special Constables. There were six arrests; three for assault, two for public order and one for drunk and disorderly. Seven directions to leave notices were issued.

At and around the fairground there was a significant gathering of a hundred plus teenagers many of whom were intoxicated. Security at the fair was largely successful in preventing people from entering the fairground with alcohol and a considerable amount of alcohol was seized. One young person was so intoxicated that they had to be taken to hospital.

Many of the young people at this location had travelled from outlying towns or villages and appeared to have brought their alcohol with them.

These and other matters have been discussed with the Carnival Safety Committee and with parental support and assistance from other partners I am confident that the Carnival experience can as enjoyable and even safer next year.

Pewsey	Crime				Detections	
	September 2009 - August 2010	September 2010 - August 2011	Volume Change	% Change	September 2009 - August 2010	September 2010 - August 2011
Violence Against the Person	62	57	-5	-8%	27%	67%
Dwelling Burglary	25	17	-8	-32%	8%	6%
Criminal Damage	76	73	-3	-4%	5%	12%
Non Dwelling Burglary	44	104	60	136%	0%	0%
Theft from Motor Vehicle	51	42	-9	-18%	0%	0%
Theft of Motor Vehicle	12	5	-7	-58%	8%	20%
Total Crime	397	408	11	3%	14%	16%
Total ASB	285	278	-7	-2%		
<p>Wiltshire Police are compared against a group of 8 most similar forces. Wiltshire Police have performed better than peers in All Recorded Crime and Violent Crime for the most recently reported 3 month (May - Aug 2011) and 12 month period (Aug-Jul 2011)</p> <p>*Total Crime comprises all Crime Groupings listed above and also includes Theft and Handling, Fraud and Forgery, Robbery and Sexual Offences</p> <p>** Detections include both Sanction Detections and Local Resolution</p>						

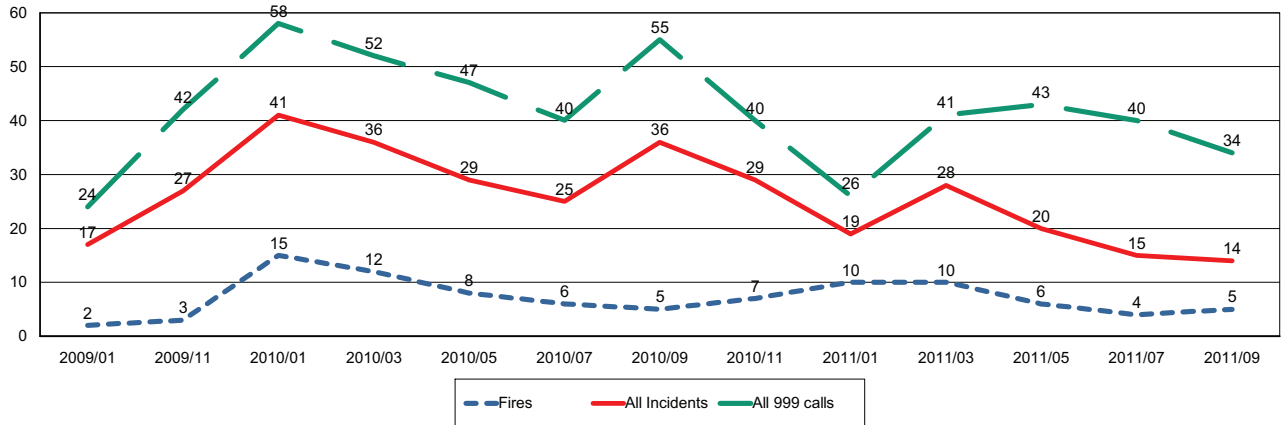
Inspector Ron Peach 07/11/11
Area Commander



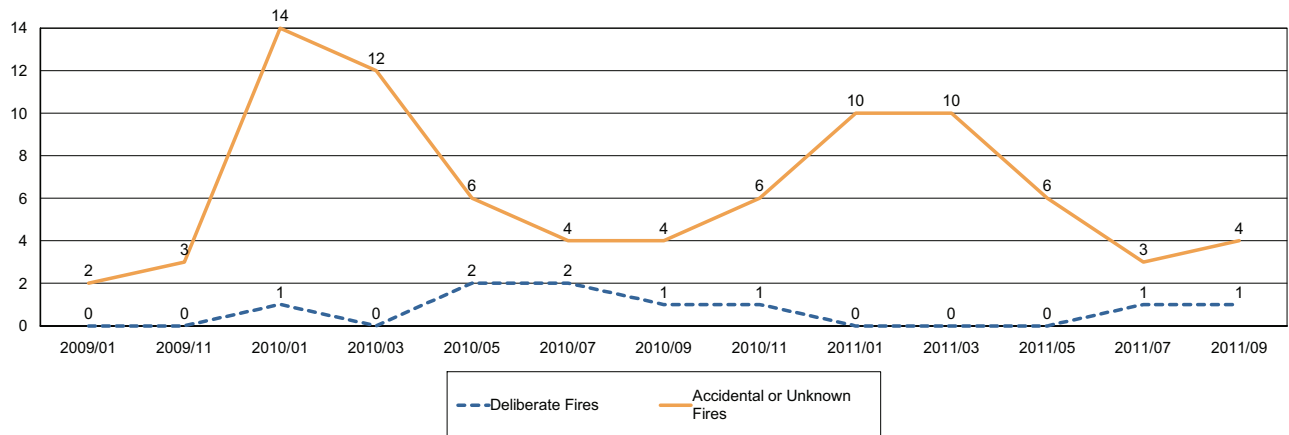
Report for Pewsey Area Board

The following is a bi-monthly update of Fire and Rescue Service activity up to and including September 2011. It has been prepared by the Group Manager for the Board's area.

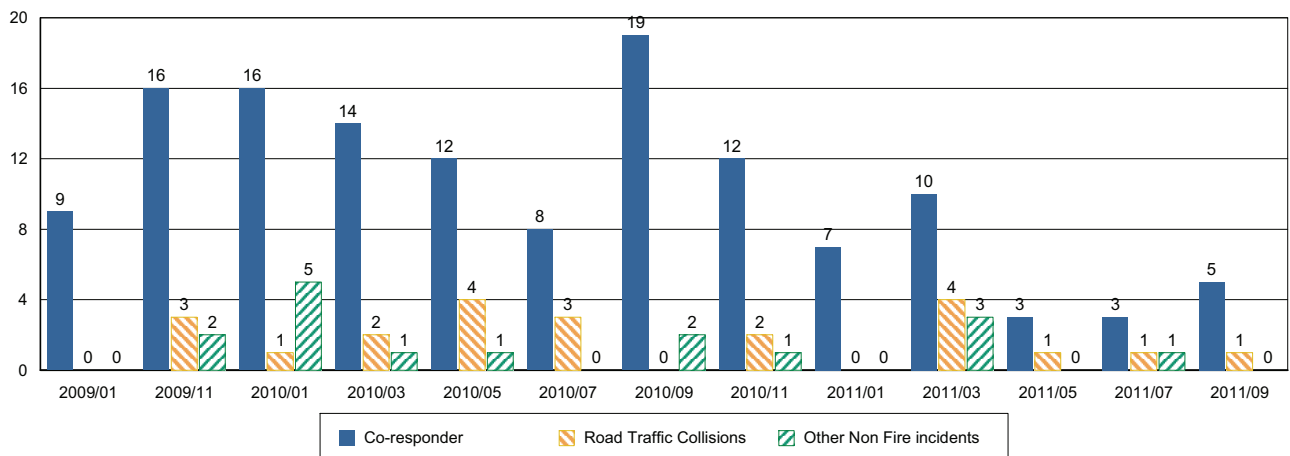
Incidents and Calls



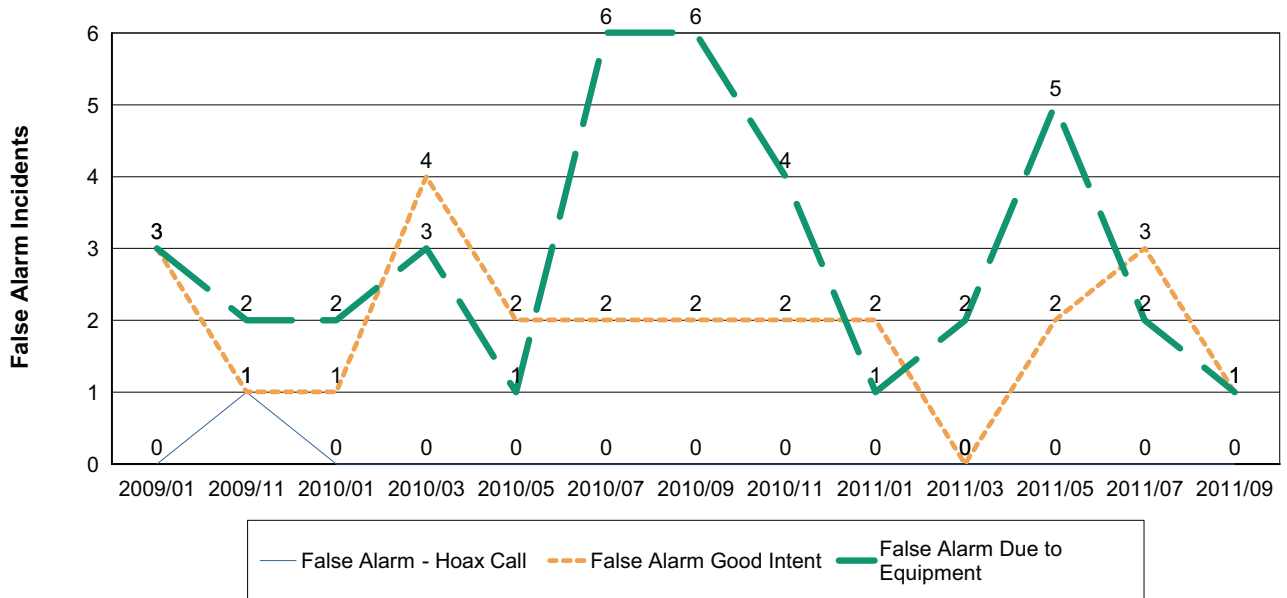
Fires by Cause



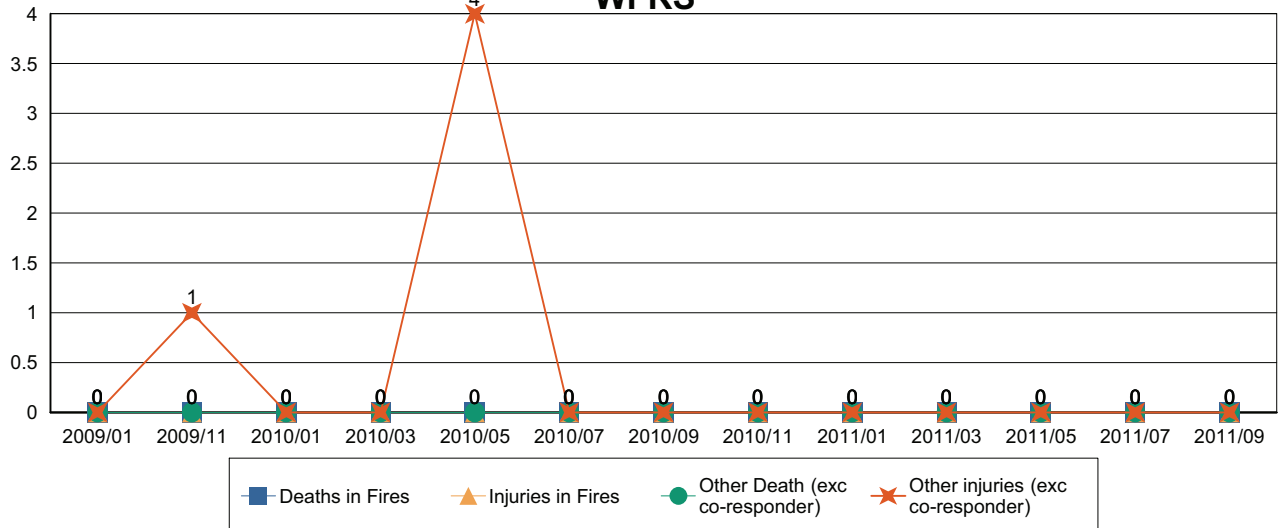
Non-Fire incidents attended by WFRS



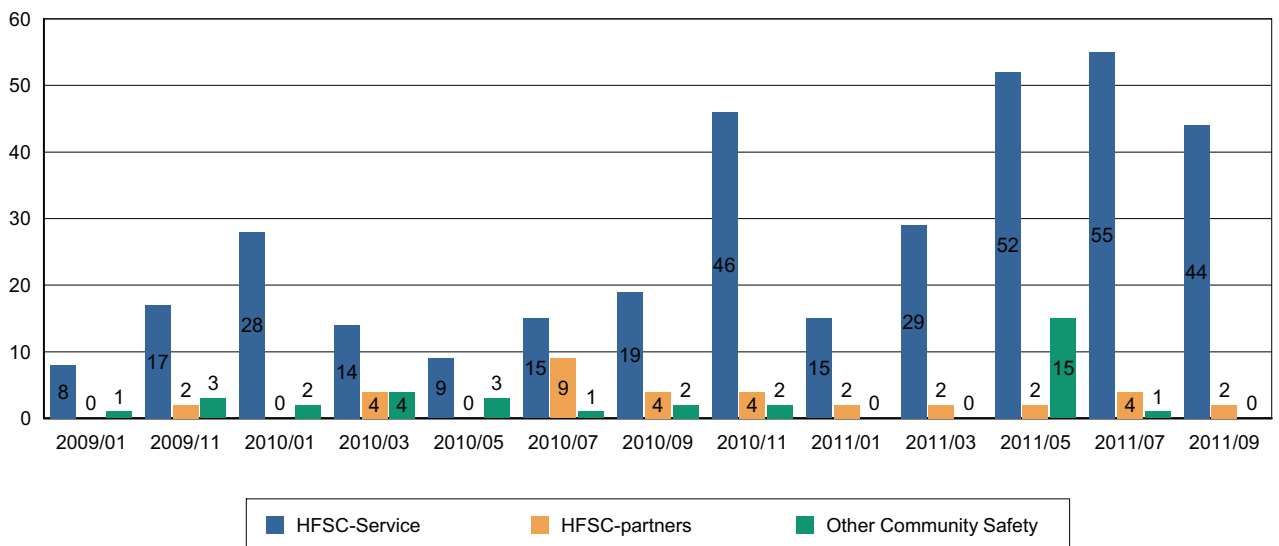
Number of False Alarm Incidents



Death & Injuries in incidents attended by WFRS



Home Fire Safety Checks and other domestic safety



NHS Update – October 2011

Passport to your flu jab

Health professionals in Wiltshire are encouraging people to get their flu vaccination this autumn, with a special reminder to those particularly 'at risk' by way of a new 'Flu Vaccination Passport'. Flu is a highly infectious illness that spreads rapidly through the coughs and sneezes of people who are carrying the virus. If someone is at risk of complications from flu, it's really important they have their annual flu jab.

This year NHS Wiltshire, in partnership with Wiltshire GPs, is making it easy for people to remember to have their jab by providing a health 'Passport', available from GP surgeries. The Passport will help to act as a reminder for people with busy lives to call their GP and arrange to receive valuable protection against flu. Flu symptoms can hit quite suddenly and severely. They usually include fever, chills, headaches and aching muscles and are often accompanied by a cough and sore throat. Because flu is caused by a virus and not bacteria, antibiotics won't treat it.

Anyone can get flu, but it can be more serious for certain people, such as:

- people aged 65 or over
- people who have a serious medical condition
- pregnant women

Individual passports have been designed for each of these 'at risk' groups.

People in these groups are more vulnerable to the effects of seasonal flu (even if they are usually fit and healthy) and it's recognised that they can go on to develop a more serious illness, such as bronchitis and pneumonia, which could result in a stay in hospital. Flu can also make existing medical conditions worse, so it's important people to take up the offer of a vaccination.

Useful information about flu:

Get the jab

The best time of the year to get a flu vaccination is now - the autumn. It's free and it's effective against the latest flu virus strains. Even if someone has already had a flu jab in previous years, they need another one this year to keep immunity up to date. The flu jab may only protect someone for a year, because the viruses that cause flu are always changing. This year's seasonal flu vaccination also includes a vaccine to protect against swine flu. See your GP about the flu jab if you're 65 or over, or if you have any of the following problems (however old you are):

- a serious heart complaint
- a chest complaint or breathing difficulties, including asthma, bronchitis and emphysema
- serious kidney disease
- diabetes
- lowered immunity due to disease or treatment such as steroid medication or cancer treatment
- if you have a problem with your spleen or you have had your spleen removed
- if you have ever had a stroke

Your GP may advise you to have a flu jab if you have serious liver disease, multiple sclerosis (MS) or some other diseases of the nervous system. If you think you may need a flu vaccination,

ITEM No. 10(c)

check with your GP, practice nurse or your local pharmacist. If a nurse visits you regularly, ask about getting your flu vaccination. Most GP surgeries arrange vaccination sessions in the autumn.

Pregnant women

Pregnant women at any stage of pregnancy should have the seasonal flu jab. That's because pregnant women are more prone to complications from flu that can cause serious illness for both mother and baby. If you are pregnant and catch flu, talk to your GP urgently as you may need treatment with antiviral medicine.

The pneumo jab

When you see your GP for a seasonal flu jab, ask whether you also need the 'pneumo jab' to protect you against some forms of pneumococcal infection. It's available free on the NHS to everyone aged 65 or over, and for younger people with some serious medical conditions.

Kids and carers

If you're the parent of a child (over the age of six months) who has a long-term condition such as a serious respiratory or neurological condition, they should have a flu jab. Speak to your GP about your child having a flu vaccination. Your child's condition may get worse if they catch flu. If you're the carer of an elderly or disabled person, make sure they've had their flu jab. As a carer, you could be eligible for a flu jab too. Ask your GP for advice, or go to Carers Direct for information about Flu jabs for carers.

How effective is it?

No vaccine is 100% effective, however, people who have had the flu jab are far less likely to get flu. If you do get flu despite having the jab, it will probably be milder than if you haven't been vaccinated. The flu jab doesn't cause flu as it doesn't contain live viruses. However, you may experience side effects after having the jab, such as a temperature and aching muscles for a couple of days afterwards. Your arm may feel sore at the site where you were injected. More severe reactions are rare.

The flu vaccine only protects against flu, but not other illnesses caused by other viruses, such as the common cold.

Speak to your GP, practice nurse or pharmacist if you have any further questions.

Item No. 10(e)

Update for Pewsey Area Board

Update from	Woodborough Parish Council
Date of Area Board Meeting	Monday 7 November 2011

Headlines/Key Issues

- The original PIGS application, rejected in June/July this year because Wiltshire Council felt it could not be progressed until the Coroner's Inquest had been completed, has been re-submitted. It is expected that it will now be seriously considered within the current funding term because it has now been confirmed officially by the police that there will be NO inquest (the coach driver having pleaded guilty and been sentenced, thus negating the need for the inquest to be held). Hence, the PIGS application, if successful, will provide the funding for the pathway in the field adjacent to Smithy Lane. We believe that Mark Stansbry (Highways) has the lead in element, and both the Parish Council and the WRSG await his report with anticipation. He is also examining the possibility of further traffic calming measures both at the school and on the approach road to the school from the north / Honeystreet.

-
- The WRSG continues to work closely with both the parish council and the school, and all are now investigating the potential opportunity of attracting further funding from 'Taking Action on School Journeys' towards the cost of the crossing and the exit point of the new path from the field.

-
- The school currently has a valid 'School Travel Plan' lodged with Wiltshire Council, but is seeking to update further a part of that plan. Although this is a matter for the school to undertake, only an eventual amalgam of a number of funding streams is likely to provide sufficient funds to implement the final solution to this phase of the of the project / issue.

-
- The issue was discussed at the CATG meeting on 19 October, at which Cllr Robert Hall was present, and he may well wish to make some comments at the next AB meeting as well.

Item No. 10(h)

Pewsey community campus –2nd round of Consultation

Dear Friends,

This letter is to introduce a second round of consultation on your needs for a Pewsey Area Campus.

There was a very positive response to our first postal survey in which 71% of you expressed strong support for a campus facility in Pewsey, embracing a range of centralised public services for access by all who live in the community area. The 2 sites being considered are the new library site, and the present Leisure Centre site. It is likely that the new services will be spread over both sites, with a satellite service in the Burbage/Bedwyns area to bring some of the new services nearer to those in the extreme east.

I attach a copy of the report which we presented to the Area Board on 6th October, highlighting 3 broad themes which we shall now pursue in greater detail. These are; **modern leisure facilities, improved youth services** and a range of **other face-to-face services for adults and the elderly**. Our intention is to bring these various other services into the community; in other words to 're-personalise' what can be an impersonal world in rural areas such as ours.

In addition, I would like to draw your attention to a series of open meetings around the area in November, and we would urge you to come along, hear our proposals, tell us your needs and help us to fill in the essential detail.

The planned open meetings are as follows:

GRAFTON Village hall – Saturday 19th November 9am-12noon.

BURBAGE Village Hall – Monday 21st November 7-9pm

PEWSEY VALE SCHOOL – Wednesday 23rd November 7-9pm

PEWSEY Methodist Hall – Saturday 26th November 9.30-12noon

BEDWYN Village Hall - Monday 28th November 7-9pm

SHALBOURNE Village Hall – Wednesday 30th November 7-9pm

Other meetings may be organised as required. We hope to see you all there.

If you are unable to attend any of the meetings or if you have any questions, please email campusconsultation@wiltshire.gov.uk or telephone 01225 718677.

Bob Woodward

Chair, Pewsey Shadow Community Operations Board

To find out more about community campuses, look online at www.wiltshire.gov.uk/pewseycommunitycampus

PEWSEY AREA SHADOW COMMUNITY OPERATIONS BOARD (SCOB).

Report to Pewsey Area Board on 6th October 2011

**Report by Mr Robert Woodward, Chair of Pewsey Area SCOB
(On behalf of; Miss R Goff (non-exec), Mr C Haskell, Mr T Hatfield, Mr D line,
Mrs C Maddocks, Mrs W Spencer. and Wilts Cllr S Wheeler)**

Intro' and Background

The Pewsey SCOB was formed by the Area Board on 9th May and arose from a Wiltshire Council Cabinet policy on 15th February to examine the opportunities of 'localising' some council services as much as possible, and maximising the time-sharing of those facilities. It will be the intention of the SCOB to examine and define which new facilities and services can be provided on the Campus sites, in order to improve the day to day quality of life for our area community. It is freely accepted that any proposals for future capital expenditure by Wiltshire Council arising from these studies must be fully argued and justified by the demonstrable need.

The Pewsey Area already has a modern, fit for the future, library which includes some IT facilities, a personal care facility (i.e. providing washing and changing facilities for disabled people and their carers) and a small secure meeting room. However, this will now be further examined to see what additional beneficial use(s) can be made of the space and facilities available. The Leisure Centre and associated Youth Club (SHAK) on the other hand have lacked investment over the years (with the fitness suite being a notable exception) and are generally considered to be not fit for the future. Moreover, there are many other community 'services' which are currently not available within the Pewsey area.

Following appointment of the SCOB members on 4th July, we had to consider how best to canvass the views of our residents. This report outlines the measures we took to carry out a mass consultation, gives the response, and makes working proposals for the next steps.

The Initial Consultation Process

Bearing in mind the geographical span of our area, primarily from East to West, we decided that a mass meeting was unrealistic in the early stage but that a mass free-post questionnaire to all registered householders was the preferred first step - to allow all individuals to give a personal opinion, backed up by a selective approach to all identified community bodies for their 'group' response.

These groups included all Parish Councils, Churches, surgeries and health-related groups, Youth Groups, schools etc. In all, 6000 free-post questionnaires were circulated together with around 100 groups being separately canvassed. I apologise if you consider that you, or a group you belong to, have not been given the

opportunity to comment. This was unintentional and if you let us have your contacts we will endeavour to make sure that you are not forgotten in the next round.

In addition, we have used the press and parish magazines to spread the word.

Initial Survey Responses

A total 1063 questionnaires were returned, representing a strike rate of 17.4%. This level of response is considered to be satisfactory for a mass public survey and provides a solid basis for proceeding with a second round of targeted consultations, together with some Campus Open Days across the Board area.

We conclude from the response that people care about the provision of services we are establishing for the future in the Pewsey community area. Listed below is a resume of the initial findings arising from this first round of consultation:

- 71% of the returns favoured a Campus which includes several council services. 14.6% were not sure and 9.5% were not in favour.
- 75% were for a modern Leisure Centre
- 54% were for a public activity space
- 64% were for a library
- 62% were for provision of youth services
- 57% were for provision of outdoor/all-weather facilities
- 54% were for access to council services
- 55% were for other public sector services
- 50% were for internet access
- 47% were for a café
- 37% were for a playgroup
- 34% were for a skateboard park
- 37% were for a creche
- 28% were for a luncheon club

The 3 most important factors that would enable access to these services are; opening times, costs of services and car parking.

Other important considerations in design and travel planning are; car parking on site, convenient bus stops and good bus services, and secure cycle areas.

Include in the body of feedback from the survey is a considerable stream of individual comment, very nearly 600, which we shall have to analyse, group together, and digest for the next round of consultation. In any event, it will all be studied and used.

West Versus East ?

One of the more obvious factors facing us is the East/West divide. A number of respondents have commented on the distance from a Pewsey Campus to the extreme east of our area – Shalbourne, Ham, Buttermere etc – who may consider, for example, Hungerford to be a more convenient portal for Leisure and Youth

ITEM No. 10(h)

Appendix

services. Similarly, Burbage, Grafton and the Bedwyns may naturally gravitate towards Marlborough. Whilst we cannot sensibly consider providing a separate leisure centre for them, we may, in the next round, have to consider how best to provide a flexible delivery in community locations possibly using existing space(s) and an appointment system, in terms of other services.

It should be borne in mind that almost exactly one third of our area community lives east of the A338/A346.

Key Findings and Working proposals

It seems obvious at this early stage that a split campus solution is the most beneficial. Whether it be dual-Pewsey, or dual Pewsey/East of Burbage remains to be investigated.

In any event, it is likely that not everything asked for can be provided and there will be a need for some compromise; it will be the SCOB's aim to minimise any negative impact of this. At the end of the day, the SCOB must be able to support a sustainable business plan to present to the Wiltshire Council Cabinet.

Having conducted a preliminary analysis of the initial survey, three broad themes emerge; these are; modern leisure facilities, improved Youth facilities, and services for adults and the elderly. With these in mind, the Pewsey SCOB offers the following working proposals for the Area Board's consideration.

To further explore the potential for a split campus site, comprising:

- A modern Leisure centre at the present location, to include: High quality swimming provision for both able and disabled swimmers.
- A full range of indoor and some outdoor facilities.
- A modern Youth Centre, including skateboard park.
- A community services campus facility located adjacent to the present Leisure Centre and Pewsey Vale School, possibly connecting both, and including flexible space for meetings and use by a wide range of community service partners (social, welfare, support, advisory etc), including Wiltshire Council.
- The possibility of a satellite outstation for the provision of community services to the east of the community area (Burbage, the Bedwyns etc) on a shared basis with the main Pewsey campus.
- The current library, with examination of the potential for further exploitation of the new facilities

Proposed Next Steps.

If these proposals are approved by the Pewsey Area Board, The Pewsey SCOB now intends to:

- carry out a second round of targeted consultations with known bodies and groups,

ITEM No. 10(h)

Appendix

- host some 'open days/evenings' in Pewsey and elsewhere during October and November. This will enable the SCOB to discuss with interested parties what we are seeking, and what, in detail, they desire.
- define, with the community, precisely what current services could be beneficially improved for the future, and which new services can be incorporated into the campus sites.
- examine the natural link with Pewsey Vale School as a 'partner' in further developing the campus proposals.

Recommendations to the Area Board

The Area Board is invited to:

- **note this report from the Pewsey SCOB.**
- **approve the working proposals put forward for a split-site campus.**
- **endorse the further steps proposed in the Pewsey SCOB work programme.**
- **approve the holding of a further specially convened AB meeting, when appropriate, to consider detailed proposals from the Pewsey SCOB for campus provisions in the Pewsey Community Area.**

Area Board Issues
Pewsey Community Area

ID	Category	Division	Summary of Issue	Status
72	Highways (CATG)	Pewsey	Pedestrian Access to Pewsey Station	24/10/2011 The CATGs bid for substantial funding has been unsuccessful - the group are recommending to the area board that it remains as priority 1 but kept on hold until funding is available. Contact is being made with First Great Western and Network Rail.
91	Highways (CATG)	Vale	Traffic Calming/pavement in Rushall	24/10/2011 This has been considered by the Community Area Transport Group - it scored highly and is number 3 on the list of priorities. A scheme has been drawn up which is being discussed locally - funding of £15,156.46 has been set aside for this scheme. A further £4,043 has been requested so that the path extends as far as The Old Barnyard and CATG are recommended this in their report to the area board.
515	Highways (CATG)	Pewsey	Speeding and rat running through Sharcott	No Change 01/12/2010 Speed Survey carried out. A total of 4881 vehicles were checked. The 85th percentile was 33.6mph (the 85th percentile is the speed at which 85% of the traffic is travelling at or below). This is a 60mph limit. There will be a review of C and Unclassified roads in the near future so there could be a possibility of the limit reducing. The highways department have been asked to consider the use of Single Track Road signs. This request has been added to a long list of sites awaiting investigation.
538	Highways (CATG)	Vale	Speeding on the A342 and through Chirton	24/10/2011 The stretch of A342 through Chirton is due to be reduced to 40mph. A speed survey concluded that the level of speeding through the village is below the threshold for community speed watch. The review of C and unclassified roads will not permit a 30mph to be reduced to a 20mph until the conclusion of the 20mph pilot scheme.
1360	Highways	Pewsey	Safety of pedestrians and road users at Kings Corner, Pewsey	19/08/2011 The wall has now been re-built and the road is now open again – This issue will be closed
1478	Highways (CATG)	Vale	Reports of speeding on stretch of road either side of Woodborough School	No Change Speed survey was carried out The survey was carried out between 28/04/2011 and 11/05/2011. A total of 15612 vehicles were checked. The 85th percentile was 31.3mph (the 85th percentile is the speed at which 85% of the traffic is travelling at or below). In a 30mph speed limit the following criteria will be applied; 30 to 34.9mph 85th percentile = No Further Action (NFA) 35 to 38.9 mph 85th percentile = eligible for Community Speed Watch 39 to 42 mph 85th percentile = eligible for the Speed Indicator Device (SID) programme This issue will now be closed as there is a new issue requesting traffic calming outside the school
1515	Highways	B&B	Speeding on Marlborough Road, Burbage	No change 28/03/2011Community Area Manager has written to the Parish Council requesting that they complete a speed survey request form which identifies the location for the equipment.
1594	Highways	B&B	Problems with commuters parking in residential area, The Knapp, Great Bedwyn	24/10/11 A scheme has been developed which has been shared with the parish council and Knapp Tenants Association – a public meeting was held following which the parish council rejected the scheme. The Knapp Tenants Association are considering legal action if the scheme does not go ahead.

ITEM NO. 12

1605	Highways	Vale	Parking problem Chirton School	No Change The parish council and school are working on a new travel plan
1723	Highways	Vale	Speeding at Alton Priors	24/10/11 Another speed survey is being done closer to the 30mph sign. On 24/10/11 the NPT carried out enforcement for 45 minutes between 0830-0915. Vehicles were checked as they came into the village from the Pewsey direction. There was no cause to stop anybody during this period; the fastest recorded speed was 33mph.
1854	Highways	Pewsey	Speeding on Ball Road Pewsey – requesting 20mph limit, flashing signs, or police with speed gun	No Change There are 20 mph pilots underway at the moment but no decisions will be made on expanding this programme until a 12 month monitoring period has elapsed which is at least 6 months away. This issue will be brought to the attention of the parish council and the police so that the problem can be monitored. If the parish council and the police through further monitoring agree that there is a problem we will arrange a speed survey; the results of this will tell us if it is eligible for community speed watch or the SID programme.
1884	Highways (CATG)	Pewsey	Footpath between Prospect and the French Horn, Pewsey	24/10/2011 Parish Council to be consulted.
1929	Highways (CATG)	Vale	Speed of vehicles approaching Huish Come, Oare, on A 345	24/10/2011 This has been discussed at CATG. A highway engineer will visit the site to make an initial assessment and report back to CATG in February.
1930	Highways (CATG)	Vale	Traffic calming/road improvements at Swan junction at Wilcot	24/10/2011 CATG are recommending to the area board that this scheme request be rejected as a mini roundabout would be costly, and if there were to be one there could be no parking in the vicinity. A parking restriction would be more effective. The parish council are invited to request parking restrictions in the interests of road safety. There will be some tweaks to the white junction lines, but due to the camber of the road the junction cannot be moved back.
1931	Highways (CATG)	Pewsey	Footpath needed from Sunnyhill Lane, Oare towards Prospect	30/09/2011 This is on the CATG list – currently priority 13
1933	Highways (CATG)	Pewsey	Extension of 40mph limit from Oare to Prospect	24/10/2011 CATG have discussed this - the speed limit review has been completed and no further requests will be considered. However as this area is being recommended to be changed from 60 to 50 mph there will be an opportunity for the parish council to object when it is formally advertised. The review had been very thorough and consistent and this stretch does not meet the criteria for a 40mph limit – to be closed
1942	Highways (CATG)	B&B	Pavement widening, Brook Street/Church Street Corner, Great Bedwyn	24/10/2011 A pavement build out scheme has been agreed by the parish council. The cost is £4,500. CATG are recommending that the parish council contribute £500 with the remainder from the area board CATG budget.
1957	Highways (CATG)	Vale	Traffic calming and crossing point outside Woodborough School	24/10/2011 This has been discussed at CATG and is currently priority 6. Any crossing ought to be considered as part of the school travel plan and taking action on school journeys bid. The calming measures identified would be appropriate for CATG. CATG have recommended to the area board that preliminary design work and costings be done and reported directly to the 9 January meeting and if appropriate a councillor led funding application be made at that time.
1964	Highways (CATG)	Vale	Footpath at Grey Flags, Upavon	17/10/2011 This is on the CATG list - currently priority 4

ITEM NO. 12

Abbreviations: CATG – Community Area Transport Group; NPT – Neighbourhood Policing Team; Vale – Pewsey Vale; B&B – Burbage & Bedwys; SID – Speed Indicator Device

ITEM No. 13

Report to	Pewsey Area Board
Date of Meeting	7 November 2011
Title of Report	Community Area Grants

Purpose of Report

To ask Councillors to consider two applications seeking 2011/12 Community Area Grant Funding

1. Super Strings, promoting string playing for children between 5 and 18 to include community based workshops and a large BBC concert with over 100 children playing in a world premier performance as part of the Cultural Olympiad Festival 2012. Seeking £4,060 – Office recommendation to award £4,060 on condition that the project receives approval from Marlborough, Bradford on Avon and Devizes Area Boards.
2. Wilton Cricket Club – improvement of the practice net area and investment in new kit for youth training and club cricket. Officer recommendation to award £1,000.

In accordance with the Area Board Grants Guidance officers are required to provide recommendations in their report, **however, the decision to support applications and to what level is made by Wiltshire Councillors on this Area Board.**

1. Background

- 1.1. Area Boards have authority to approve Area Grants under powers delegated to them by the Deputy Leader and Cabinet member for Community Services (15 April 2011). Under the Scheme of Delegation Area Boards must adhere to the Area Board Grants Guidance for funding.
- 1.2. In accordance with the Scheme of Delegation, any decision of an Area Board that is contrary to the funding criteria and/or the officer's recommendation would need to demonstrate that the application in question has a wider community benefit, and give specific reasons for why this should justify an exception to the criteria.
- 1.3. The emphasis in the Coalition Government's Localism agenda supports the ethos of volunteering and community involvement. With this in mind Community Area Grants should be encouraged from and awarded to community and voluntary groups.
- 1.4. Area boards will not consider applications from town and parish councils for purposes that relate to their statutory duties or powers that should be funded from the local town/parish precept. However this does not preclude bids from town/parish councils, encouraging community projects that provide new opportunities for local people or those functions that are not the sole responsibility of the town/parish council.
- 1.5. Officers are required to provide recommendations in their report, although the decision to support applications and to what level is made by Wiltshire Councillors on the Area Board.
- 1.6. Funding applications will be considered at every Area Board meeting.
- 1.7. All applicants are encouraged to contact Charities Information Bureau who is working on behalf of Wiltshire Council to support community and voluntary groups, town and parish councils to seek funding for community projects and schemes both from the Area Board and other local and national funding sources.
- 1.8. Paper copies of funding applications will no longer appear as part of the agenda in an attempt to reduce volume of paper used. However, the application forms will be available on the Wiltshire Council web site and hard copies available upon request.
- 1.9. The 2011/2012 funding criteria and application forms are available on the council's website (www.wiltshire.gov.uk/areaboards) or paper versions are available from the Community Area Manager.

Background documents used in the preparation of this Report	<ul style="list-style-type: none">• Community Area Grant Application Pack 2011/12• Pewsey Community Area Plan
--	--

2. Main Considerations

- 2.1. Councillors will need to be satisfied that grants awarded in the 2011/12 year are made to projects that can realistically proceed within a year of the award being made.
- 2.2. There will be six rounds of funding during 2011/12. The fourth is contained in this report the remaining will take place on;
 - 9 January 2012
 - 12 March 2012

3. Environmental & Community Implications

Community Area Grants will contribute to the continuance and/or improvement of cultural, social and community activity and wellbeing in the community area, the extent and specifics of which will be dependent upon the individual project.

4. Financial Implications

- 4.1. Awards must fall within the Area Boards budget allocated to the Pewsey Area Board.
- 4.2. If grants are awarded in line with officer recommendations, Pewsey Area Board will have a balance of £20,784

5. Legal Implications

- 5.1. There are no specific Legal implications related to this report.

6. HR Implications

- 6.1. There are no specific HR implications related to this report.

7. Equality and Inclusion Implications

- 7.1. Community Area Grants give all local community and voluntary groups, Town and Parish Councils an equal opportunity to receive funding towards community based projects and schemes.

8. Implications relating to individual grant applications are outlined within section 8 – “Officer Recommendations”.

Officer recommendations

Ref	Applicant	Project proposal	Funding requested
8.1 (pew.11.014)	Super Strings	Promoting string playing for children between 5 and 18 to	£4,060

		include community based workshops and a large BBC concert with over 100 children playing in a world premier performance as part of the Cultural Olympiad Festival 2012	
--	--	--	--

- 8.1.1. Award £4,060 as the application meets the grant criteria 2011/12 on condition that the project receives approval from Marlborough, Bradford on Avon and Devizes Area Boards.
- 8.1.2. The project demonstrates links to the Community Plan Community Plan on page 22-28 in widening opportunities for young people, in diversionary activities for young people and in supporting the Arts.
- 8.1.3. The applicant is Superstrings which is a not for profit organisation with a management group of 6. The group is contributing £7,120 from its own fundraising/reserves and seeking £12,180 from the Devizes, Marlborough and Bradford-on-Avon area boards (£4,060 each). The group are also applying to a number of other foundations/trusts of £10,000. This is part of a wider project including the above mentioned area boards. The total project cost across the four areas is £33,360
- 8.1.4. The costs of the project are mainly for the cost of musicians and workshops. Approximately 50 children from the community area will be involved, with approximately 20 involved in the March performance.
- 8.1.5. The project is promoting string playing for children between the ages of 5 and 18, encouraging young people to engage in group music making through community based workshops followed by larger workshops in 3 community areas with outstanding folk musicians.

There will be a large scale BBC concert in Swindon with over 100 children playing in a world premier performance of a commissioned work – this will contribute to the Cultural Olympiad Festival 2012. Peter Tyas, Head of Arts and Heritage is in support of the project.

The second phase of the project will see a second performance in the Wiltshire Music Centre – funding for this will be sought from private donors. Additionally there will be an opportunity for all children participating in the regular parish sessions to play together in a third major concert in 2013.

- 8.1.6. If the area board did not fund the project it will be scaled down considerably. The workshops in local parishes would not go ahead nor the follow on activity after March 2012 in Schools. Board funding in this project will enable Superstrings to reach out to children who are less interested in playing in an orchestra but would benefit from and enjoy playing traditional music and tunes in a relaxed and positive environment.

Ref	Applicant	Project proposal	Funding requested
8.2 (Pew.11.012)	Wilton Cricket Club	Improvement of the practice net area and investment in more kit for youth training and club cricket	£1,000

8.2.1 The Officer recommendation is for approval as the application meets the grant criteria 2011/12

8.2.2 The application demonstrates links to the Community Plan as follows:-

Page 26 section 6.6 and 6.7 – increase the availability of activities for 8-12 year olds – improving sports facilities.

8.2.3 The applicant is the Wilton Cricket Club which is a not for profit organisation managed by a committee of 8 volunteers.

8.2.4 The project is for the purchase of equipment to improve the practice net area, together with practice mat, balls, bats, pads and gloves.

8.2.5 The total cost of the project is £1,000.

Appendices – Grant application forms

(available to view online at <http://cms.wiltshire.gov.uk/ieListDocuments.aspx?CId=177&MId=5360&Ver=4>)

No unpublished documents have been relied upon in the preparation of this report.

Report Author	Caroline Brailey, Pewsey Community Area Manager Tel: 01225 718609 E-mail caroline.brailey@wiltshire.gov.uk
----------------------	---

PEWSEY AREA BOARD – Forward Plan

Please note: This is a working document which is subject to change due to availability of relevant officers/partners and relevant timescales.

Date	Cabinet Member Attending	Location	Provisional Agenda Items	Other events/items
09 Jan 2012	Councillor John Thomson	Burbage Village Hall, Eastcourt Road, Burbage SN8 3AJ	<ul style="list-style-type: none"> • Pewsey Community Campus – second consultation phase draft proposals for Area Board approval? • Fees and Charges Policy • Participatory Budget – Young People <p>Standard items including Updates and Community Area Grants</p>	

Community Area Manager: Caroline Brailey (caroline.brailey@wiltshire.gov.uk)
 Democratic Services Officer: Sharon Smith (sharon.l.smith@wiltshire.gov.uk)
 Service Director: Ian Gibbons (ian.gibbons@wiltshire.gov.uk)

Updated: 19 October 2011

